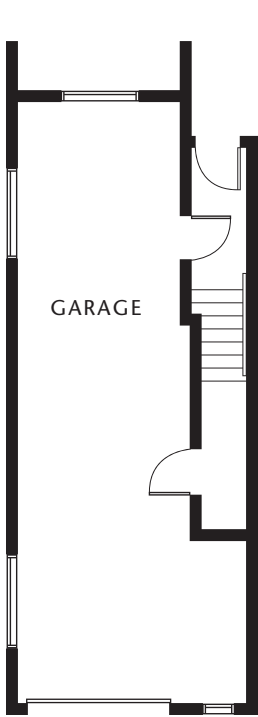
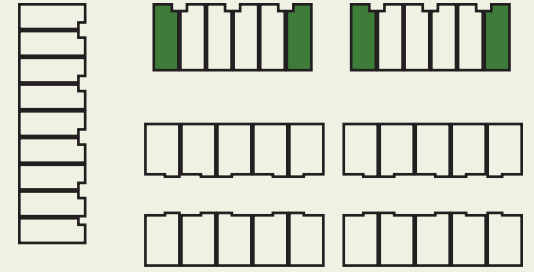
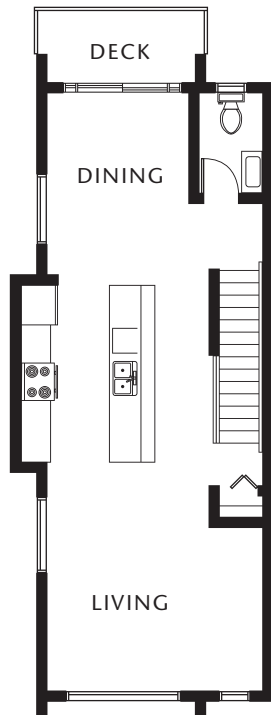




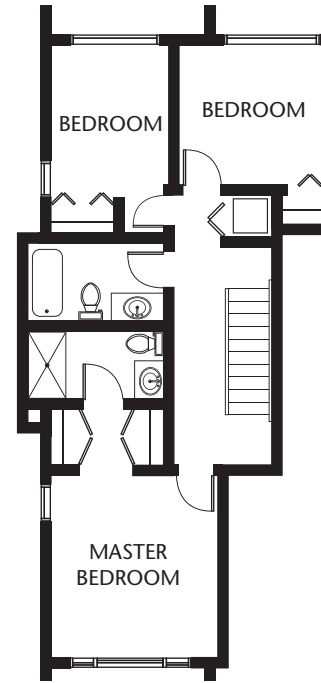
**PLAN B-s**    3 BEDROOMS    **INDOOR:** 1537 sq. ft. (excludes garage)    **OUTDOOR:** 650 sq. ft.



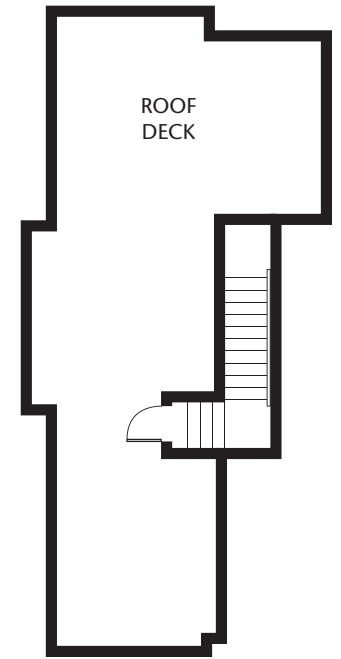
**FIRST**



**SECOND**



**THIRD**



**FOURTH**

Disclaimer:  
 This is currently not an offering for sale. Such an offer can only be made by way of disclosure statement. In our continuing effort to improve and maintain the high standard of the LIFT development, the developer reserves the right to modify or change plans, specifications, features and prices without notice. Materials may be substituted with equivalent or better at the developer's sole discretion. All dimensions and areas are approximate and are based on surveyor measurements. As reverse and/or mirrored plans occur throughout the development phases please see latest set of architectural plans for current layout if material to your decision to purchase. Illustrations and renderings are an artist's conception and are intended as a general reference only. E.&O.E. Sales and Marketing provided by HomeLife Benchmark Langley liveatlift.com 604-834-4188.